



**COLORADO**  
Department of  
Transportation



**US 550–US 160  
Connection South**



# US 550 / US 160 Connection South

Reverse Trade Fair  
September 12, 2018

# Reverse Trade Fair



## Goal

- Build connections with our contract community as we seek the strongest team to meet our project goals.
- Provide insight into the project, the project's purpose and need as well as the projects desired outcomes.

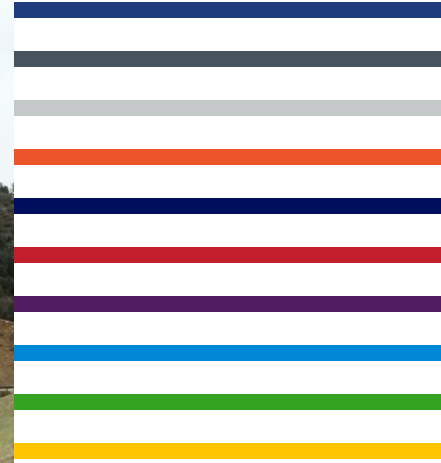


**COLORADO**

Department of  
Transportation



**US 550-US 160  
Connection South**



# Project Background



# Reverse Trade Fair

## Project Background and Timeline

- May 2006 – The FEIS for US 160 from Durango to Bayfield was published
- November 2006 – The Record of Decision (ROD) for US Highway 160 from Durango to Bayfield was signed, including a new interchange for US 160/US 550 intersection.
- Nov. 2011 – The US 160 Grandview Interchange was completed. This project included a second westbound lane, 4 major bridge structures and ramps.
- April 2015 – ROD for the US 550 south connection of US 160 was signed.
- Nov. 2017 – La Plata County FASTLANE grant of \$12.3 million.
- Nov. 2017 – The Colorado TC approved \$54.4 million
  - Funding acknowledged benefit of extending project beyond CR 220 combining Connection and 302N Segments
- Nov. 2017 – CDOT garners funding support from several local partners
- July 2018 – La Plata County awarded \$1 million DOLA grant

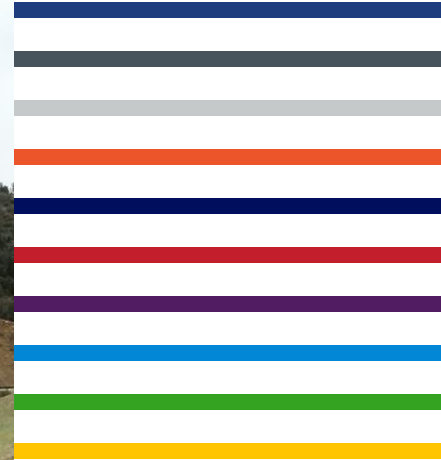


**COLORADO**

Department of  
Transportation



**US 550-US 160  
Connection South**



**Design-Build**

# Reverse Trade Fair

## Design-Build Benefits

1. Delivery Schedule
2. Innovation
3. Level of Design In Design-Build
4. Project Cost
5. Project Risk
6. Owner Staff Experience and Availability
7. Level of Oversight and Control Oversight
8. Competition and Contractor Experience





# Reverse Trade Fair

## Request for Proposals

Table 4-1. Design-Build Documents	
<b>Book 1 – Contract</b>	
Book 1 is the overriding Contract that governs the design and construction of the project. Key elements of the book include:	
<ul style="list-style-type: none"> <li>• Contract Terms</li> <li>• Defined Terms</li> <li>• Warranties</li> <li>• Equal Employment Opportunity/Disadvantaged Business Enterprise</li> <li>• Bonding</li> <li>• Insurance</li> <li>• Payment</li> <li>• Project Schedule</li> <li>• Completion and Milestone Dates</li> </ul>	<ul style="list-style-type: none"> <li>• Processes and Procedures               <ul style="list-style-type: none"> <li>○ Dispute Resolution</li> <li>○ Change Management</li> <li>○ Partnering</li> <li>○ Third-Party Cooperation</li> <li>○ Audit and Inspection Rights</li> <li>○ Incentives and Disincentives</li> <li>○ Value Engineering</li> </ul> </li> </ul>
<b>Book 2 – Technical Requirements</b>	
Book 2 provides the project-specific Technical Requirements of the project, including design criteria, methodology, and deliverables; project-specific construction requirements; and operational requirements. Book 2 is divided into 20 sections:	
01. General (includes the Basic Configuration) 02. Project Management 03. Quality Management 04. Public Information 05. Environmental 06. Third-Party Agreements 07. Utilities 08. Right-of-Way 09. Survey 10. Geotechnical and Pavements	11. Earthwork 12. Drainage 13. Roadways 14. Signing, Pavement Marking, Signalization, and Lighting 15. Structures 16. Transportation Management Plan 17. Landscaping 18. Maintenance during Construction 19. Intelligent Transportation System 20. Modification of Standard Specifications

<b>Drawings</b>
Drawings are provided to be used in conjunction with the drawings include Plans, geotechnical and details.
<b>Specifications</b>
Specifications of Reference Documents
<b>Conditions</b>
Conditions (ROD)

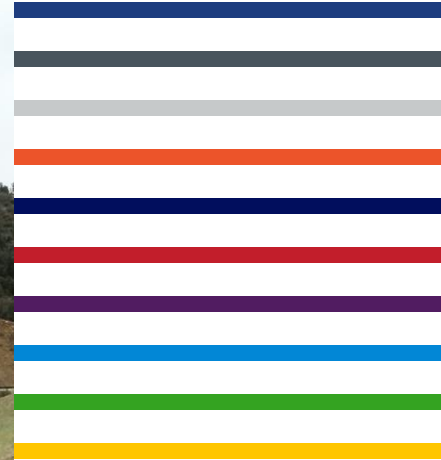


**COLORADO**

Department of  
Transportation



**US 550-US 160  
Connection South**



**Project Goals**





# Reverse Trade Fair

## Purpose and Need

- US 550 South Connection to US 160 and the US 160 EIS projects' Record of Decision defines the purpose and need to be:
  - To increase **travel efficiency/capacity** to meet current and future needs.
  - To improve **safety** for the traveling public by reducing the number and severity of crashes.
  - To **control access** for safety and mobility flow improvements.
- US 550 Finding of No Significant Impact defines the purpose and need to be to improve **safety**, address future **highway capacity** needs, **improve access** conditions, and address roadway deficiencies. Specific Safety and Access needs:
  - Reduce fixed-object hazards adjacent to the highway and improve errant vehicle recovery opportunity;
  - Reduce animal-vehicle collisions;
  - Reduce conflicts between through and turning vehicles;
  - Improve sight distance;
  - Improve access management; and
  - Separate turning movements and local access from through traffic.



## Reverse Trade Fair

# Workforce and Small Business Goals

- Two DBE Goals
  - Design and Construction
- ESB Goal
- On-The-Job Training Goal
- TERO- OJT goal

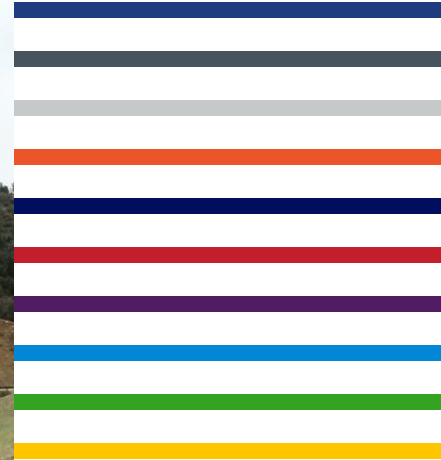


**COLORADO**

Department of  
Transportation



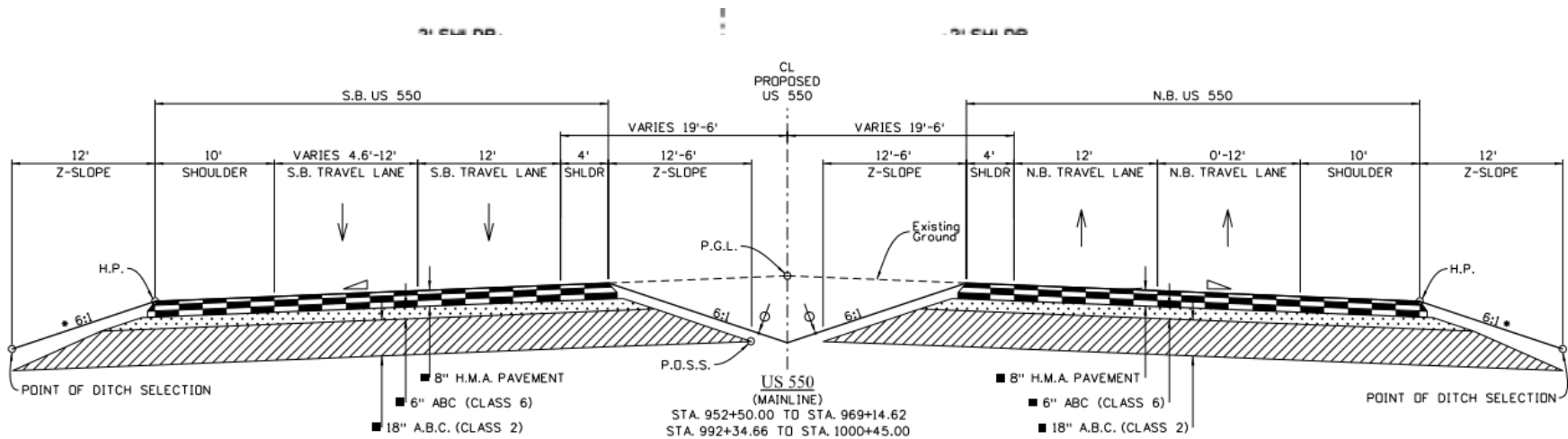
**US 550-US 160  
Connection South**

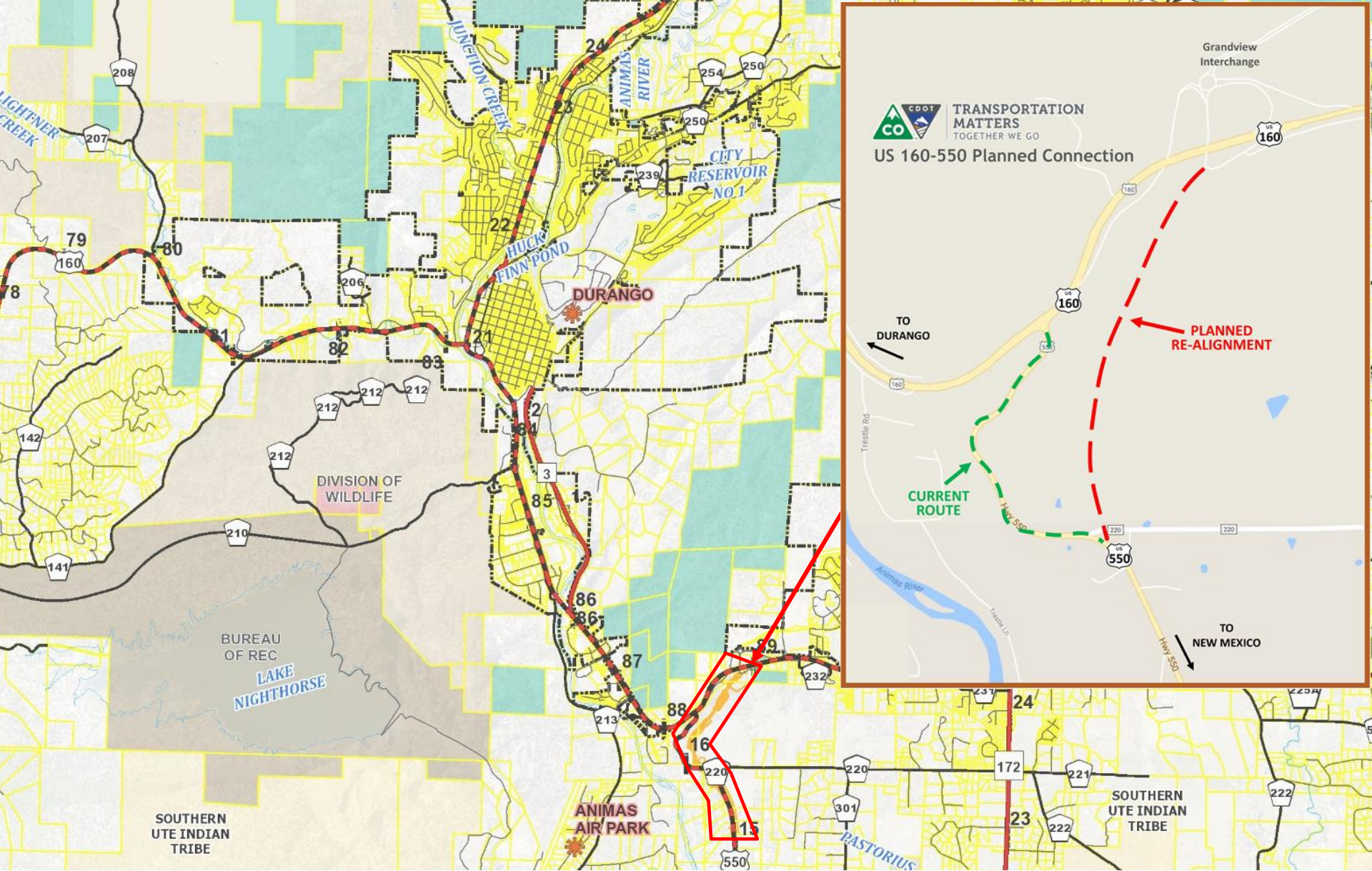


**Project Scope**

# Reverse Trade Fair

## US550/160 Connection Scope





**COLORADO**  
 Department of  
 Transportation

# US 550 - US 160 CONNECTION

# Reverse Trade Fair



## US550/160 Connection Scope

### Key Components

- Realign interchange / intersection between US 160 and US 550
- **Four Lane** to CR 220 [Create climbing lane for Freight (FASTLANE)]
- Improve CR 220 Intersection (FASTLANE)
- Improve safety via a deicing system on the structures and at the RAB (FASTLANE)

### Project Scope

- 1 to 2 M CY of excavation
- 2 major Bridges (200 and 475 feet long with the latter being 100 feet tall)
- WLUP (Deer fencing, jump outs and small mammal crossing)
- Cattle/Wildlife Overpass

CDOT Presents  
US 550 Connection  
Video Fly Through



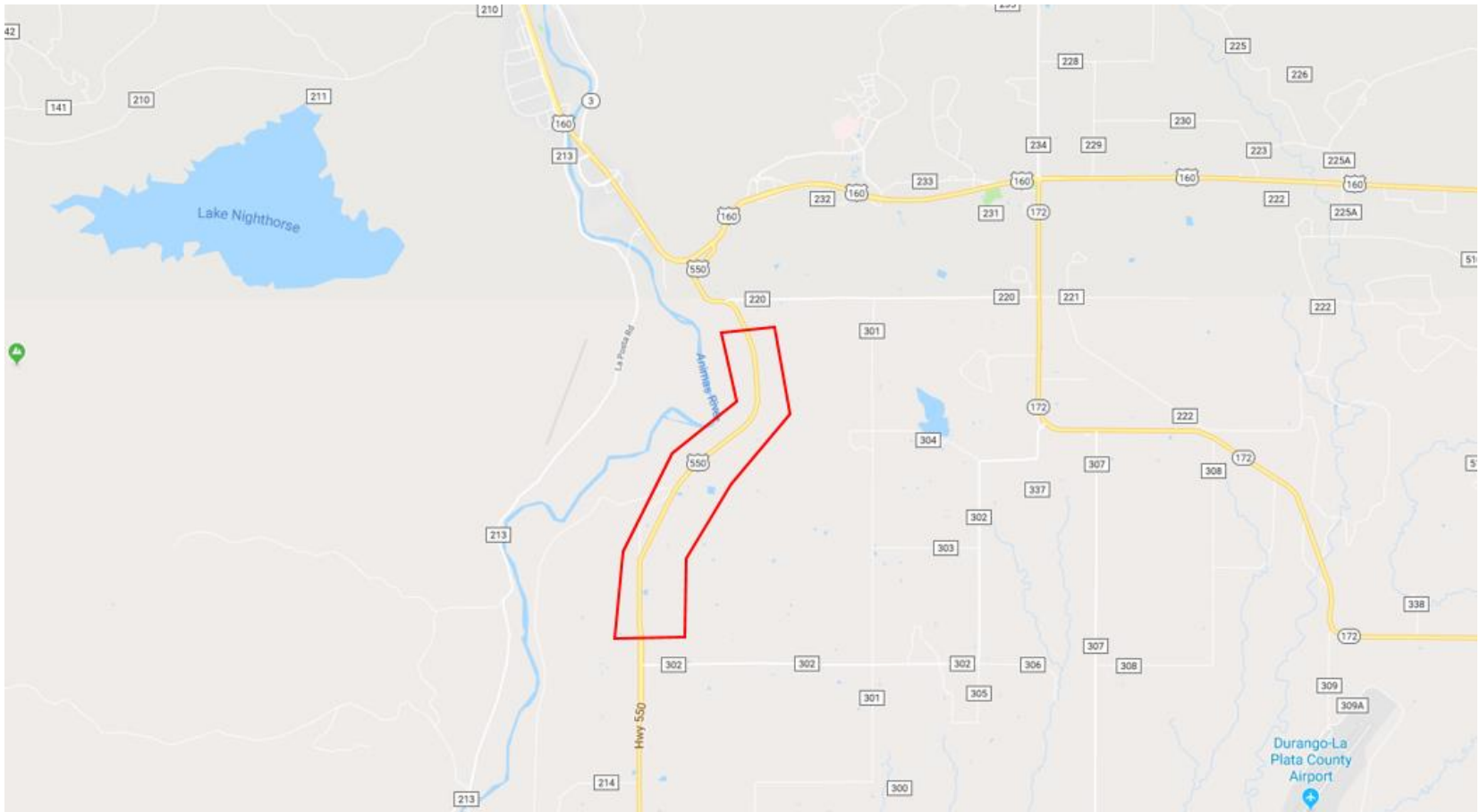
**COLORADO**  
Department of  
Transportation

## US 550 - US 160 CONNECTION



# Reverse Trade Fair

## CR 302 North





# Reverse Trade Fair

## 302N Scope

### Key Components

- Four Lane to CR 302 (Previously completed project)
- Improve CR 219 Intersections (DOLA)
- Improve safety and mobility

### Project Scope

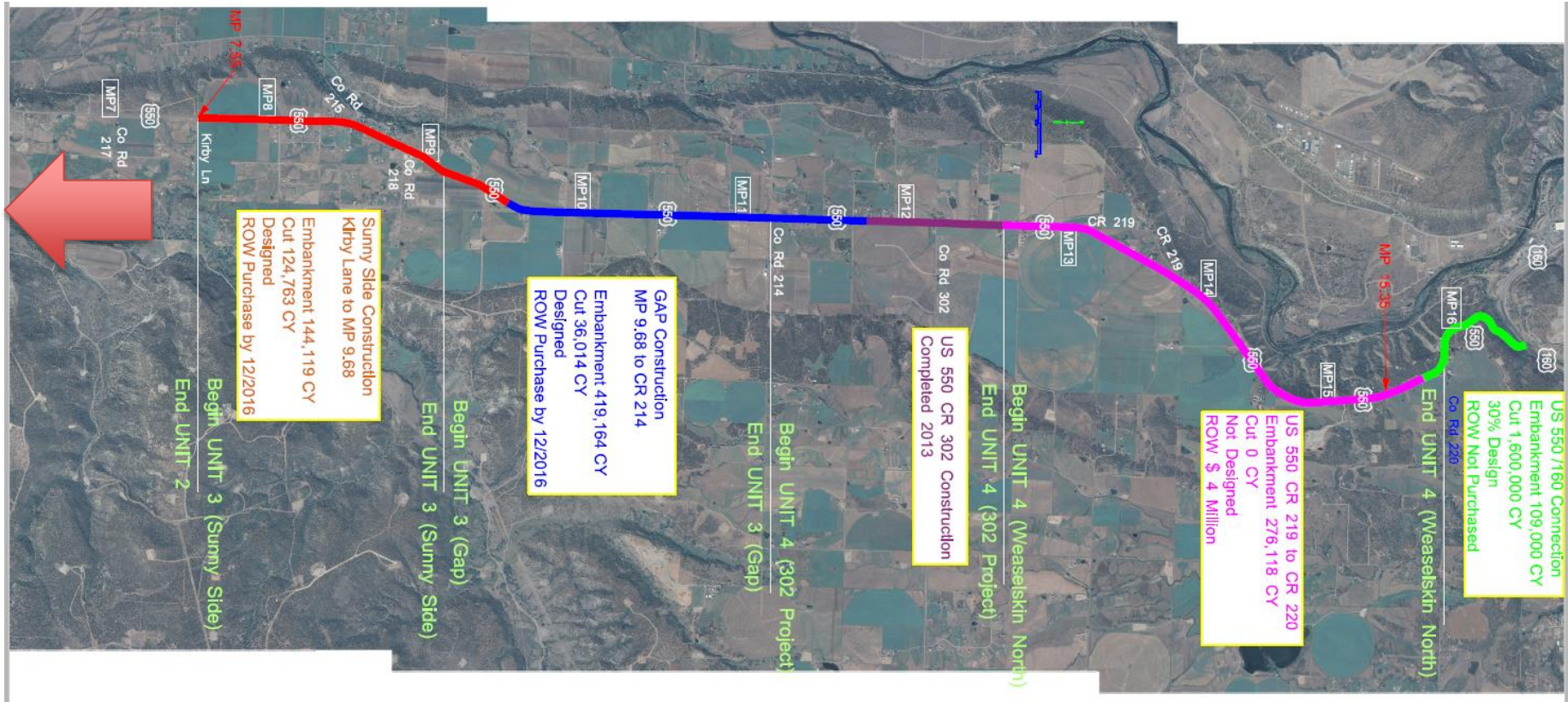
- Over 250,000 CY of embankment
- WLUP (Deer fencing, jump outs and small mammal crossings)
- 4-lane divided





# Reverse Trade Fair

## US 550 / US 160 Connection South to Kirby Lane

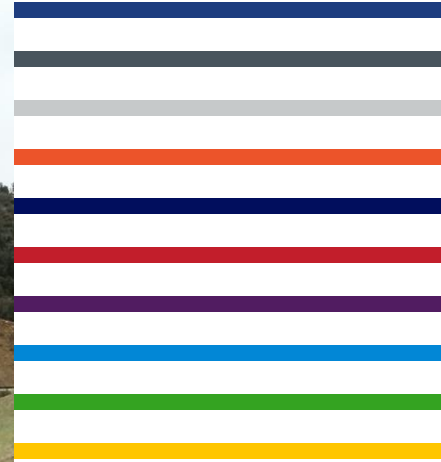




**COLORADO**  
Department of  
Transportation



**US 550-US 160  
Connection South**



**Team**

# Reverse Trade Fair

## Project Partners

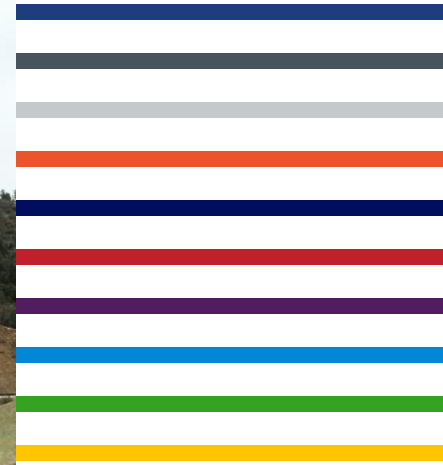
- La Plata County
  - Funding contributor
  - FastLanes Grant Recipient
  - DOLA Grant Recipient (County Roads 220, 219, Abandonment of old US 550)
- City of Durango
  - Funding contributor
- FHWA
  - PoDI / Design-Build Agreement
  - FastLane Grant Administrator
- Southern Ute Indian Tribe (SUIT)
  - TERO Fee (2%)
  - TERO OJT and Tribal Workforce
  - Funding contributor





**COLORADO**

Department of  
Transportation



**Budget**



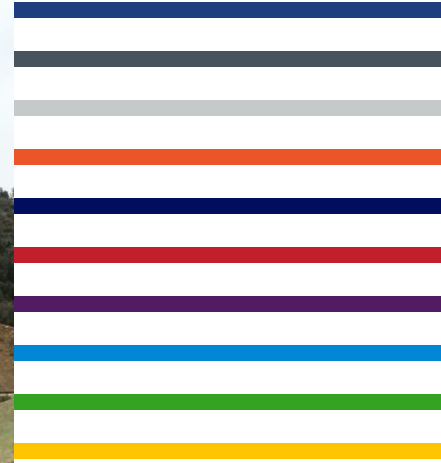
# Reverse Trade Fair

## Budget

- Completing exiting actions
  - ROW
  - Environmental
  - Utilities
- Design-Build Project
  - FastLanes \$12.3M
  - SB 267 \$54.4M
  - Region Funding \$29.9M
  - Partnerships/DOLA \$ 2.0M



**COLORADO**  
Department of  
Transportation



**Schedule**



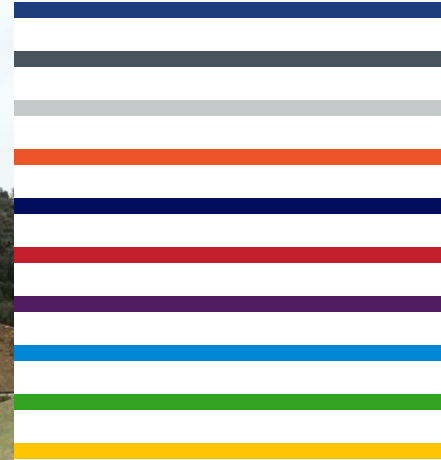
# Schedule

<b>Proposed Timeline</b>	<b>Events Processed</b>
November 2018	Letter of Interest
Mid-December 2018	Letter of Interest Responders
December 2018	Request for Qualifications
February 2019	Statement of Qualifications
March 2019	Short List Selection
March 2019	Draft Request for Proposal (RFP)
September 2019	Final Request for Proposal
December 2019	Contract Procurement of Design-Build Team (Notice to Proceed)





**COLORADO**  
Department of  
Transportation



References



# Project References

## External References

- Website: <https://www.codot.gov/projects/us-550-us-160-Connection-design-build>
  - La Plata County GIS
  - Environmental Documents
  - Current Designs (design files pending)
  - History
  - Etc

Design-Build Manual:

<https://www.codot.gov/business/designsupport/innovative/2016-cdot-d-b-manual/2016-cdot-db-manual/view>

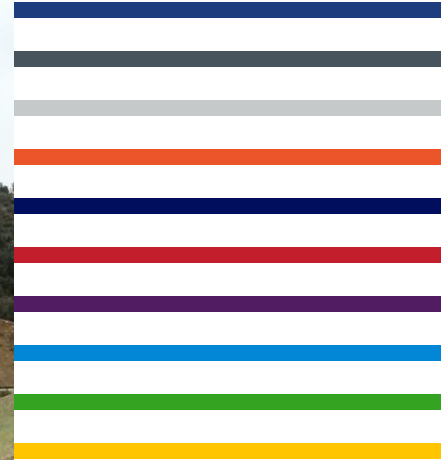
- Project Director:
  - David R. Valentinelli
  - Cell: 970.749.2756
  - David.valentinelli@state.co.us



**COLORADO**  
Department of  
Transportation



**US 550-US 160  
Connection South**



Questions?



**COLORADO**

Department of  
Transportation



**US 550–US 160  
Connection South**



**End Presentation**